

**School Reconstruction Program in Phulpingdanda,
Sindhupalchowk District**

PROJECT COMPLETION REPORT

(Jan 02, 016 - Dec 31, 016)



Submitted To:

SWAN Deutschland e. V. Germany

Submitted by:

SOCIAL WELFARE ASSOCIATION OF NEPAL

KATHMANDU, NEPAL

(15 Jan, 2017)

**SOCIAL WELFARE ASSOCIATION OF NEPAL
(SWAN)**

**School Reconstruction Program in Phulpingdanda,
Sindhupalchowk District**

**PROJECT COMPLETION REPORT
(Jan 02, 016 - Dec 31, 016)**

ACRONYMS

CGI - Corrugated Galvanized Iron
DEO - District Education Office / Officer
DoE - Department of Education
DPC - Damp Proof Course
EAA - Emergency Analyst Associate
HDP - High Density Pipe
HSS - Higher Secondary School
MoU - Memorandum of Understanding
MoE - Ministry of Education
PCC - Plain Cement Concrete
PS - Primary School
PTA - Parents Teacher Association
RC - Resource Center
RP - Resource Person
RRM - Reinforced Retaining Masonry
SIP - School Improvement Plan
SMC - School Management Committee
SWAN - Social Welfare Association of Nepal
VDC - Village Development Committee

ACKNOWLEDGEMENT

This project was implemented in financial support of SWAN Deutschland e.V. Germany and in close coordination with District Education Office, Sindhupalchowk. SWAN sincerely acknowledges all of them for their valuable supports provided during the course of implementation of the project. We also express our sincere thanks to Ms Barbara Dyckhoff Karki and the board members of SWAN Deutschland e.V., respective head masters, SMC and PTA members, community, DEO Mr Rudrahari Bhandari from DEO, Sindhupalchowk and Engineer Mr Santosh Mishra from DEO Sindhupalchowk. We would also like to express our thanks to the SWAN board members for their continuous support and guidance throughout the project implementation.

Dhurba Shrestha
Program Manager

EXECUTIVE SUMMARY

This report is prepared to share the achievements of the project "School Reconstruction Program in Phulpingdanda, Sindhupalchowk District". The project was implemented in the financial support of SWAN Deutschland e.V. Germany from 02 Jan, 2016 to 31 Dec, 2016 with an objective to "support 361 students of Jalpadevi HSS and Setidevi Primary School affected by earthquake to attend schools regularly in a child friendly school environment in Fulpingdanda Village Development Committee of Sindhupalchowk district".

The school reconstruction work started from May, 016 although the contract period started from Jan 02, 016. Due to reconstruction work of semi permanent health shelters in Gorkha and Sindhupalchowk districts, the construction work started from June, 016. Prior to that quotation collection, coordination with school management committee and selection of vendors was done.

SWAN constructed 2 school buildings - one with 12 classrooms and another with 3 rooms. Altogether 15 rooms were repaired/reconstructed by the end of the 31st Dec, 2016. It also developed school improvement plan (SIP) of two schools. Both the schools have been handed over to the community. The reconstruction of these school buildings along with the supply of furniture was a crucial step in restoring the normalcy of the basic rights to education in the communities. 361 children of Shree Jalpadevi High School and Shree Setidevi Primary School now regularly attend school.

TABLE OF CONTENTS

S.No.	Heading	Page No
1	Initial Situation and Target Group Analysis	01
2	Project Achievements	04
3	Project Planning	06
4	Project Implementation	08
5	Monitoring and Supervision	13
6	Problems with Project Implementation / Methods of Resolution	14
7	Visibility	15
8	Annexes	28

CHAPTER: ONE

Initial Situation and Target Group Analysis

Background

On 25 April, a 7.8 magnitude earthquake struck Nepal causing severe destruction in 14 out of the 75 districts in the country. Two weeks later, on 12 May, another quake of 7.3 magnitude hit, worsening the humanitarian situation. A total of 8,891 people were confirmed dead, 605,254 houses destroyed and 288,255 houses damaged. During the height of the emergency, some 188,900 people were temporarily displaced.

To obtain quality education in a child friendly and safe school environment is the basic right of a child. The school education system of Nepal has provided this opportunity to all children. However, there is a big gap between the policy and the practice. Moreover, the devastating earthquake on 25 April, 2015 and its aftershocks badly destroyed more than 60 % of the schools in the highly affected districts. To ensure that children read in a child friendly and safe school environment, SWAN – Nepal has been implementing this project in Phulpingdanda VDC of Sindhupalchok district since January 016 with a view to reconstruct severely damaged school building and thereby bringing the school educational environment towards normalcy.

The Humanitarian Response from SWAN

Immediately after the earthquake, SWAN Nepal decided to reach to the quake victims for providing immediate relief support. SWAN mobilized and coordinated and reached 560 households with relief packages including medicines in three districts mainly Gorkha, Nuwakot and Sindhupalchowk.

SWAN visited Sindhupalchowk in the 4th day of the earth quake and carried out an assessment and coordinated with DHO Sindhupalchowk for the support. During the meeting with DHO Sindhupalchowk, it was found that many of the health facilities were running under the tents as an emergency response.

So, it was very important that the semi permanent health facility is built for the transitional period that is physically safe, clinically hygienic and technically equipped. After the field visit, SWAN visited DHO Sindhupalchowk and SWAN proposed to construct health facilities that do not have safe physical infrastructure, basic medical equipments, adequate medicines, and essential furnitures. SWAN reached out to 4 VDCs of Sindhupalchowk district and 2 VDCs of Nuwakot and constructed 4 temporary and 2 semi permanent health shelters.

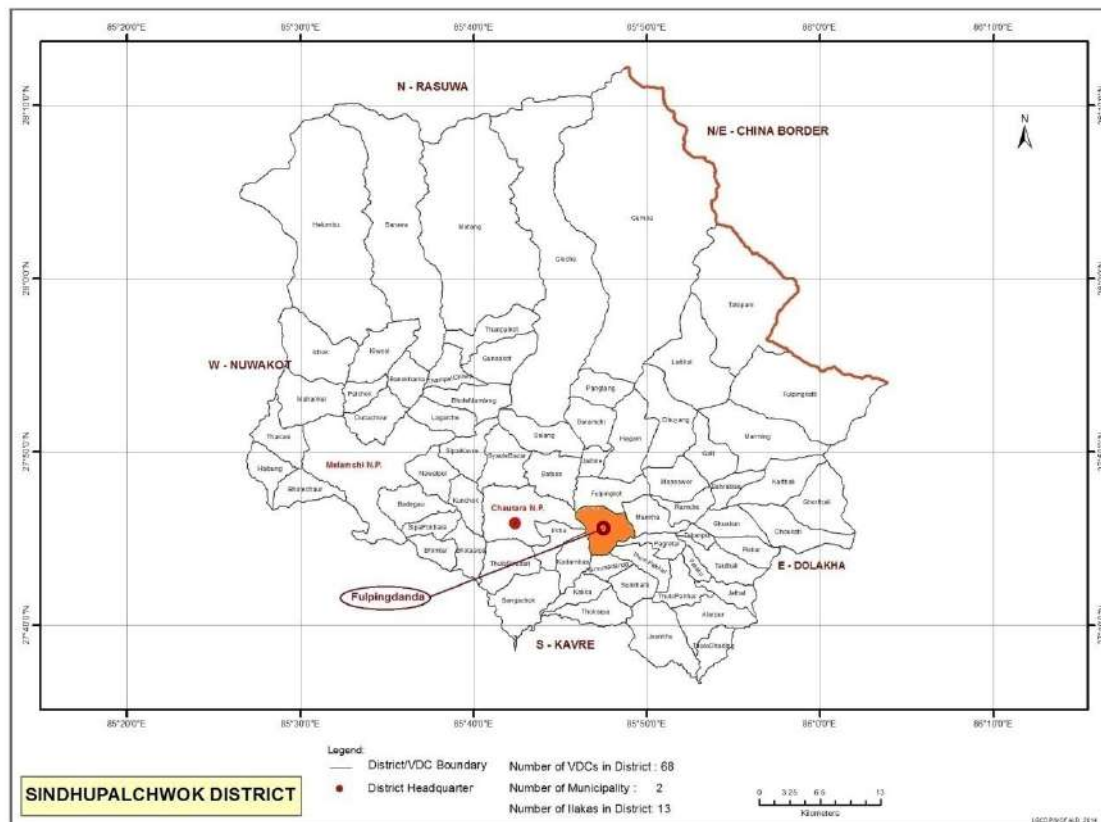
With the successful completion of construction of these six health shelters, SWAN further decided to collaborate with other partners to construct similar type of health shelters in other quake affected areas and collaborate with Apotheker Ohne Grenzen (AoG) and action medeor (am) to construct additional 11 semi permanent health shelters in Gorkha and Sindhupalchowk district.

Mean time, SWAN hired Emergency Analyst Associate to assess the school buildings damaged by earthquake. She travelled to Gorkha and Sindhupalchowk district, coordinated with District Education Office and prepared a field report on the school damage and the school necessity. Based on the field survey of the Emergency Analyst Associate (EAA) and the field visit of Program Manager and the Engineer, a proposal was developed to repair/reconstruct two schools in Phulpingdanda of Sindhupalchowk district.

Target Group for the Support:

Almost 100 percentage of school buildings were damaged completely or were dysfunctional by the earthquake. At this point every school was in dire need of the post recovery and reconstruction work. SWAN coordinated with District Education Office (DEO) Sindhupalchowk. 2 schools in Fulpingdanda were allocated to SWAN for the post recovery and reconstruction work.

Fulpingdanda VDC is one of the VDCs among 79 VDCs in Sindhupalchowk district. The VDC is geographically rural. It doesn't have regular public transportation service to all of its parts but vehicles such as trucks can have access to most of Phulping danda if the weather stays favorable. The VDC is about 80 kilo meters away from Kathmandu and is close to the Araniko Highway. The location of the VDC is 27°45'47.3"N and 85°47'34.5"E.



According to population census 2011, Fulpingdanda VDC has total 1054 Households. Total population of the VDC is 4,802 (2,305 male and 2,497 female). The average household size is 4.56 and the sex ratio of the VDC is 92.31. Tamang (25%), Chetry (24%), Brahmans (17%) and Newar (16%) are the four major castes living in Fulpingdanda. They comprise of 82% of the total population.

The literacy rate of Fulpingdanda VDC is 66% (76% Male and 57% Female). The VDC has nine schools: one higher secondary, one secondary, three lower secondary and four primary schools. All the school buildings need repair and maintenance. Currently classes are being run under tent and temporary learning centers (TLCs). Though few of the organizations are helping communities with shelter, no any support has reached to school level yet. The total number of students in the VDC as recorded by SWAN is 1,189.

Details of Students in Fulpingdanda VDC

SNo	Name of the School	ECD		G1-5		G6-8		G9-10		G11-12		Total	
		B	G	B	G	B	G	B	G	B	G	B	G
1	Balefi SS	13	8	34	59	55	88	34	43	0	0	136	198
2	Jalpadevi HSS	10	7	37	27	41	50	36	54	17	38	141	176
3	Setidevi PS	6	7	10	21	0	0	0	0	0	0	16	28
4	Phalatedevi PS	4	3	19	10	0	0	0	0	0	0	23	13
5	Keurenidanda PS	3	6	12	10	0	0	0	0	0	0	15	16
6	Binjyal PS	3	5	31	27	8	2	0	0	0	0	42	34
7	Setidevi LSS	3	4	18	21	30	20	0	0	0	0	51	45
8	Keurenidanda LSS	5	4	36	36	28	40	0	0	0	0	69	80
9	Janasewa LSS	7	5	25	34	15	20	0	0	0	0	47	59

(No of students (Boys and Girls) enrolled after the earthquake.)

CHAPTER: TWO
PROJECT ACHIEVEMENTS

Objective of the Project:

The objective of the project is to support 361 students of Jalpadevi HSS and Setidevi Primary School affected by the earthquake to regularly attend school in a child friendly school environment in Fulpingdanda Village Development Committee of Sindhupalchowk district.

Specific Objective of the Project:

- 1) Create a child friendly learning environment; and
- 2) Help communities overcome the challenges created by the earthquake and bring back their life into normal situation

Expected Outcome of the Project:

- 25 rooms in 5 buildings in 2 schools are repaired.
- 2 schools are provided furniture sets like office tables, chairs, desks and benches.
- 2 schools have developed SIP to improve the quality of education.

Revised Expected Outcome of the Project:

- 15 rooms in 2 buildings in 2 schools are repaired.
- 2 schools are provided furniture sets like office tables, chairs, desks and benches.
- 2 schools have developed SIP to improve the quality of education.

Achievements in relation to the Project Goal and Objectives:

By the end of Dec, 2016 construction of 15 classrooms in 2 schools has been completed and has been handed over to the community. 12 classrooms in the Shree Jalpadevi High School and 3 classrooms in Shree Setidevi Primary School have been constructed.

Total 318 students (academic year 2016/2017), 32 students from Shree Setidevi Primary School and 286 students from Shree Jalpadevi High School currently study in these two schools. The decrease in the number of students was due to transfer of children to schools in Kathmandu or in Banepa. After the earthquake, the parents lost their homes and many of the parents who worked out of the district carried their children to the place where they worked.

Description of actual outputs compared to planned outputs:

SNo	Activities	Planned Output	Actual output	Remarks
1	School Assessment and identify the school needs	Data collection of 9 schools Letter of DEO to schools to support SWAN in school assessment	Data collection of 9 schools at Fulpingdanda of Sindhupalchowk district completed. DEO Sindhupalchowk coordinated with schools for the assessment.	
2	Coordination with MoE and signing of MoU	Signed MoU with MoE, DEO and Schools Hand over a copy of signed contract the agreement between SWAN with MoE to respective DEOs	MoU signed between SWAN and Schools Handed over the contract agreement to schools.	During the coordination with DEO Sindhupalchowk, the DEO suggested to do the contract agreement with schools. Accordingly the

		and schools		DEO gave the approval letter to construct the school building.
3	Meeting with stakeholders (DEO, VDC secretary, SMC, teachers, PTA)	Contract agreement with school	School signed contract agreement with Shree Jalpadevi High School and Setidevi Primary School	
4	Repair and maintenance of the classrooms/building blocks	All the construction materials are stock at Sites. Construction team members timely reconstruct school classrooms as per the agreed design	Total 6 classrooms of RCC building at Jalpadevi High School repaired and 6 classrooms were repaired. Total 3 classrooms in Setidevi Primary School repaired.	
5	Supply furniture	Availability of adequate furniture at school	20 sets of furniture repaired and 48 sets of new furniture supplied to the Jalpadevi High School. At Setidevi Primary Schools, they have adequate furniture therefore we did not support furniture there. Instead, we supplied ECD materials there.	
6	Handover of school buildings	Newly reconstructed school classrooms are officially handed over to community people	2 schools handed over to the community. Shree Jalpadevi High School was handed over on 20 Oct, 016 and Setidevi Primary School was handed over on 12 Jan, 017.	
7	Facilitate schools to prepare SIP	2 Schools have School Improvement Plan (SIP)	Prepared SIP of both the schools. The Jalpadevi High School had prepared SIP last year. Therefore, we reviewed the SIP. One day review workshop was organized at school. The Setidevi primary School prepared SIP and submitted to SWAN.	
8	Form and mobilize child clubs	Child clubs are functioning at 2 schools	We did not form child clubs in school. The school had child clubs. Those child clubs were functional.	
9	Monitoring and follow up	4 events of joint monitoring and follow up done.		
10	Reporting	Quarterly Progress Reports Project Completion Report	2 quarterly reports and one project completion report prepared.	

CHAPTER: THREE

PROJECT PLANING

Coordination with DoE and DEO:

During the post recovery phase, Department of Education (DoE) coordinated with I/NGOs at central level and District Education Office (DEO) at district level. The DoE formulated rules and regulation to implement the construction of school buildings. It also developed design guidelines, school designs and provided designs for the I/NGOs to reconstruct school buildings. SWAN coordinated with DoE to receive design guidelines and school design. Based on these design guidelines and school design SWAN coordinated with District Education Office for the construction of schools damaged by the Earthquake. The DEO also helped SWAN to coordinate with schools through a resource person (RP). DEO nominated a sub engineer to monitor and guide the technical part of the school construction. The DEO and the team also visited sites, monitored the construction work and provided feedback during the reconstruction work. DEO also participated during the handover ceremony.

Coordination with School and Signing of MoU:

SWAN developed an individual school assessment tool to identify the status of damages of schools by the earthquake. The needs assessment was done regards to types of school, accessibility, student flow, damage made, availability of furniture, and availability of the teachers.

The District Education Office allocated Fulpingdanda VDC for the school reconstruction support. SWAN hired emergency analyst associate and carried a need assessment. There were total 9 schools at Fulpingdanda VDC. Among these 9 schools, 4 schools were primary, 3 schools were lower secondary, 1 was secondary school and 1 was a higher secondary school. Total 1189 students were found studying in these schools.

Details of Students in Fulpingdanda VDC

SNo	Name of the School	Types of School	ECD		G1-5		G6-8		G9-10		G11-12		Total	
			B	G	B	G	B	G	B	G	B	G	B	G
1	Balefi SS	Secondary	13	8	34	59	55	88	34	43	0	0	136	198
2	Jalpadevi HSS	Higher Secondary	10	7	37	27	41	50	36	54	17	38	141	176
3	Setidevi PS	Primary	6	7	10	21	0	0	0	0	0	0	16	28
4	Phalatedevi PS	Primary	4	3	19	10	0	0	0	0	0	0	23	13
5	Keurenidanda PS	Primary	3	6	12	10	0	0	0	0	0	0	15	16
6	Binjyal PS	Primary	3	5	31	27	8	2	0	0	0	0	42	34
7	Setidevi LSS	Lower Secondary	3	4	18	21	30	20	0	0	0	0	51	45
8	Keurenidanda LSS	Lower Secondary	5	4	36	36	28	40	0	0	0	0	69	80
9	Janasewa LSS	Lower Secondary	7	5	25	34	15	20	0	0	0	0	47	59

(No of students (Boys and Girls) enrolled after the earthquake.)

There were total 24 buildings with 80 rooms in these 9 schools. Among these classrooms, 60 classrooms need repair / maintenance and 1 school building needed retrofication where 16 columns need I-section and 8 walls had to be demolished and reconstructed. 6 schools needed toilet and urinal and 1 school needed only urinal. Total 258 sets of desk and benches, 52 pcs of white board, 41 pcs of chairs, 2 sets of principal desk and 4 sets of cupboard are necessary in these schools.

Among these 9 schools, SWAN purposed to construct Jalpadevi Higher Secondary School and Setidevi Primary School. SWAN coordinated with school management committee, teachers and PTA members, formed a school reconstruction committee and signed the contract agreement with schools for the reconstruction work.

School Design and Working Modality:

SWAN followed school designs developed by technical teams of Department of Education. The DoE in close collaboration with ADB had designed the maintenance of the schools. Most of the school buildings were designed by ADB in the past and therefore ADB helped DoE to design the school reconstruction work.

SWAN used a team of 10 members from Kathmandu to reconstruct school building of Shree Jalpadevi High School in close guidance of technical advisor. The unskilled labors were used by the community as per the need. In the case of Setidevi Primary School, local team of people was used to reconstruct the school building.

Purchase of the Construction Materials:

Social Welfare Association of Nepal (SWAN) prepared a list of construction materials that need to purchase for the reconstruction of school buildings. After the list was prepared, a notice was published in local newspaper requesting to bid for the construction materials. Besides, the bid notice was provided to local people if they wish to bid for the construction materials. Among the bidder, Kiran Enterprises from Khadichaur Sindhupalchowk was selected. SWAN purchased all construction materials from there. The furniture and paints were purchased from the Kathmandu.

Hiring of the Field Supervisor:

For the smooth functioning of the field level work, a field supervisor was hired based at Fulpingdanda. The field supervisor task was to coordinate with community people, construction team members, suppliers and logistic and monitoring associate at SWAN office in Kathmandu for smooth implementation of the project. The field supervisor worked until September, 2017.

Hiring of the Logistic and Monitoring Associate:

To supply the construction materials on time and to monitor the progress of the construction work a logistic and monitoring associate was hired. The function of the L&M Associate was to coordinate with Program Manager at central office, coordinate with field supervisor at the field and coordinate with suppliers of construction materials, furniture and paints.

Hiring of the Technical Advisor:

After the earthquake, the government and the public became aware of the earthquake resistant designs and building structure. To ensure that the construction work follows all the rules and guidelines that the DoE has developed, a technical advisor was hired for short periods - 3 months. The TA's task was to orient construction team members on the designs, monitor the construction work and ensure that the construction is done as per the guideline.

CHAPTER: FOUR

PROJECT IMPLEMENTATION

Formation of Project Management Team:

In the leadership of Executive Director, SWAN deployed a team of program manager, emergency Analyst Assistant, finance assistant, admin officer, monitoring and logistic associate, field Supervisor cum store keeper and construction members. A technical advisor was also hired for short periods of time and construction team members were hired on a daily basis for the period of construction of the school buildings. The logistic and monitoring associate and admin officer procured all the construction materials.

Preparation of Detail Work Plan:

SWAN together with construction team members discussed a detailed work plan to reconstruct school building. The construction team led by Mr. Dawa Sherpa said that the reconstruction of Shree Jalpadevi High School would take 4 months and that of Shree Setidevi Primary School will take one month. The work plan was prepared based on the following criteria:

- Mr Dawa Sherpa will lead the construction team. It will take 4 months for Jalpadevi High School and One month for Setidevi Primary School.
- A technical advisor will orient construction team before the construction work begins and will guide the construction team until the reconstruction work is over.
- A separate team of painting, furniture work and electric wiring will be hired.
- Logistic and monitoring associate will coordinate with suppliers and the field supervisor, monitor the work progress and ensure timely completion of the construction work.
- Field supervisor will stay in the field and assist construction team members in timely supply of the construction materials and coordinate with community people.
- Handover will be done after the completion of each school building.

Although the construction team agreed to reconstruct both the school buildings, they reconstructed only school building of Jalpadevi High School. The local team was hired to reconstruct Setidevi Primary School.

Coordination with School and Discussion on Design:

SWAN organized a coordination meeting in each school with teachers, members of the school management committee, members of the parent teacher association and construction committee. The purpose of these meetings was to prepare a groundwork for the construction work. The field supervisor visited each site prior to the reconstruction work begun, met teachers and school management committee members, organized a meeting and discussed on the roles and responsibility of SWAN, the school management committee and the school reconstruction committee. In each school, the design of the school was discussed.

We used local labor force and the local materials as per the field need. The school management committee (SMC) members helped SWAN to identify the local labor. Teachers and management committee members committed and agreed to water the plastered work regularly.

Construction Work:

SWAN constructed 15 classrooms of 2 school buildings - 12 classrooms at Shree Jalpadevi High School and 3 classrooms at Shree Setidevi Primary School. At Shree Jalpadevi High School, SWAN supported to extend the RCC building. SWAN constructed 6 classrooms here and repaired another 6 classrooms in the RCC building. The reconstruction of 6 classrooms was done on the first floor and 6 classrooms of the ground floor were repaired. At Setidevi Primary School, 3 classrooms in one block were repaired.

Besides SWAN supported furniture and electric wiring in both the schools and drinking water at Setidevi Primary School.

Here are the details of the construction work done.

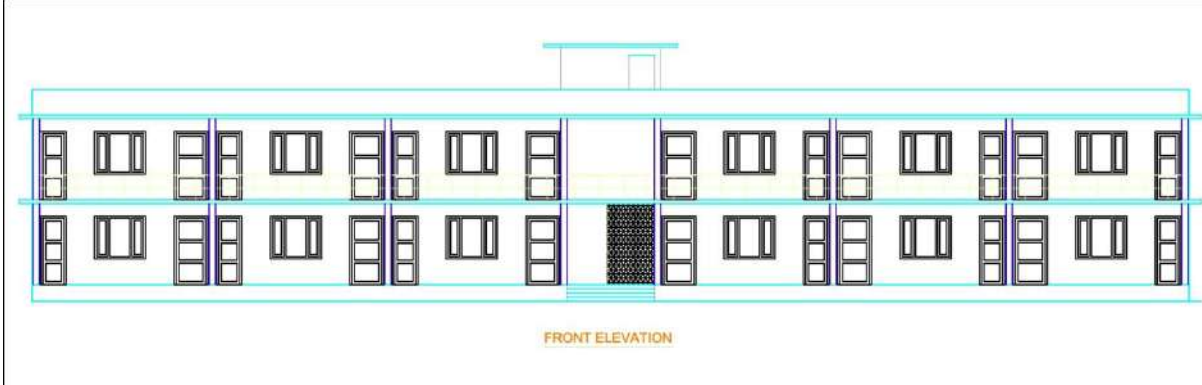


FIGURE 1 FRONT VIEW OF SCHOOL BUILDING, JALPADEVI HIGH SCHOOL

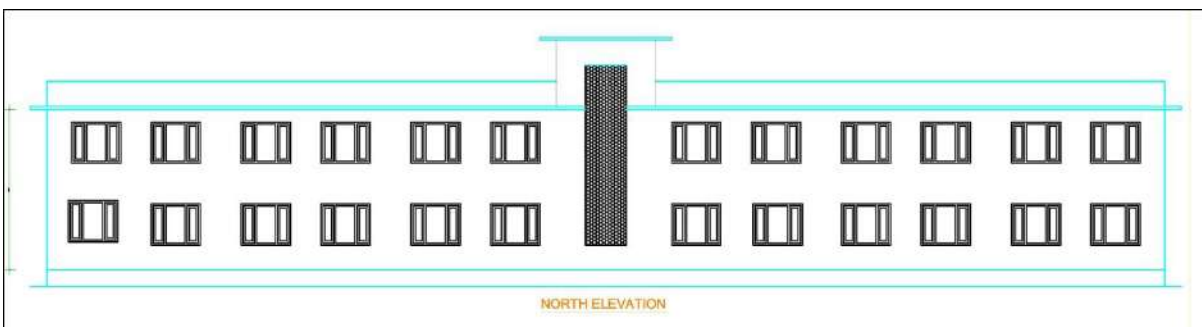


FIGURE 2 BACK VIEW OF SCHOOL BUILDING, JALPADEVI HIGH SCHOOL

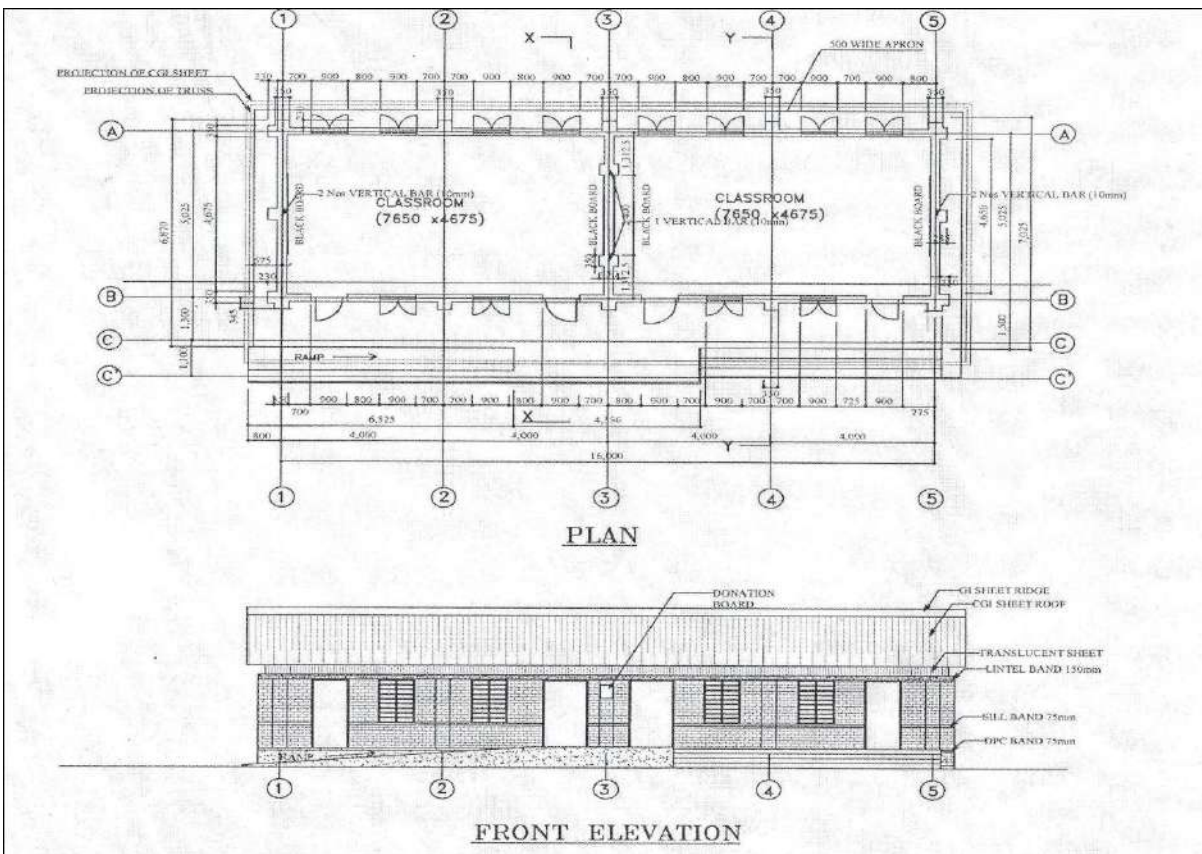


FIGURE 3 DESIGN OF SCHOOL, SETIDEVI PRIMARY SCHOOL

RCC Work:

The RCC work included first floor slab and beam, supply of reinforcement bar and cutting, bending, binding and placing in position, wooden form work for slab and beam including supply of material, placing in position and separating work and making of wall in a cement sand mortar 1:4 ratio.

Total area of the first floor slab was 2016 cft and among this 1008 cft of area of slab work was already done by school. The slab work SWAN did during this reconstruction was only 1008 cft and the wall constructed was 5799 square feet. Among 5799 square feet wall 1743 square feet of wall was constructed at Setidevi Primary School and 4056 square feet of wall was constructed at Jalpadevi High School.



FIGURE 4 FIRST FLOOR ROOF SLAB PLAN, JALPADEVI HIGH SCHOOL

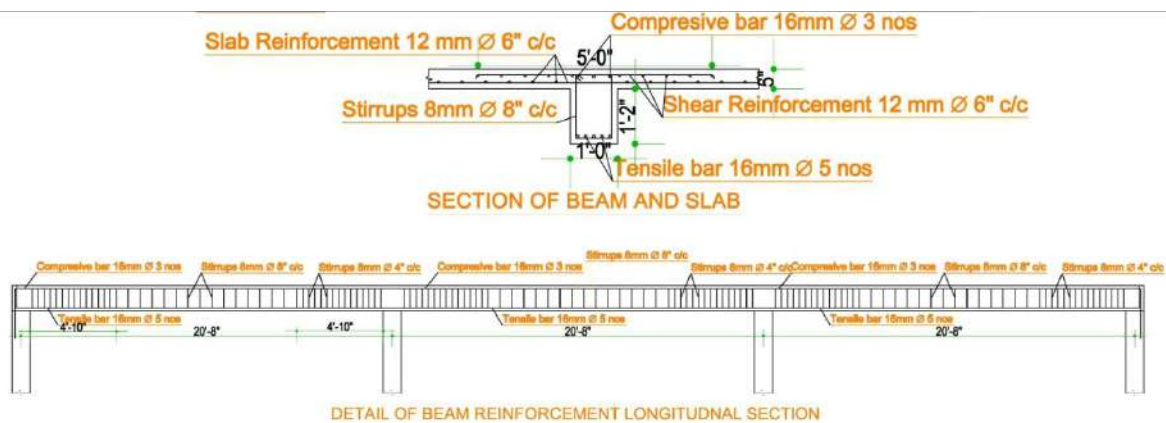


FIGURE 5 DETAIL OF BEAM SECTION, JALPADEVI HIGH SCHOOL

Cement Plaster Work:

The cement plaster work in and outside of the room and outside wall in cement, sand mortar 1:4 ratios was done at both the schools. The total area covered for cement plaster work was 18,878 square feet. At Jalpadevi the area for the plaster work was 15,412 square feet and at Setidevi Primary School the area was 3466 square feet.

Supply of Wood and making of Windows and Doors:

Total 22 doors and 35 sets of windows were supplied in two schools. 35 sets of metal grill fixed in 35 windows. 4 mm thick glass was fixed in 18 sets of windows and plywood was fixed in 17 sets of windows.

Flooring and Plaster Punning Work:

The flooring work was done in each classroom, staircase and verandah. Total flooring work in room by thin concrete 2" thick mix 1:2:4 done was 6202 square feet. At Jalpadevi total 5050 square feet of area were done flooring and at Setidevi Primary School this was 1152 square feet.

Plaster punning work in by 1:1 cement mortar was done in Shree Jalpadevi High School only. The total area covered here for the plaster punning work was 5050 square feet.

Painting Work:

Total area painted was 20,530 square feet in two schools. At Jalpadevi total area painted was 17,032 square feet and at Setidevi the total area painted was 3498 square feet. 3 coats of distemper were applied in the room wall with total area of 13,128 square feet. Similarly, 3 coats of weather coat paint was applied in the outside wall with total area of 3392 square feet and 3 coats of enamel paint was applied in the window chauthash, frame and grill with total area of 4009 square feet.

Supply of pipe and making of window railing:

The metal pipes were supplied in making railing at verandah and staircase in Jalpadevi High School. Total 196 running feet of metal were used here.

Supply of Drinking Water:

Shree Setidevi Primary School supported with drinking water supply. We provided 500 meters of HDP pipe and a water tank of 500 liter. Now school collects water from a nearby water source and students have enough water to drink and to use in the toilet.

Electrical Fittings:

Both the schools - Shree Jalpadevi High School and Shree Setidevi Primary School are fitted with electricity. We installed 18 mercury tube lights, 3 normal bulbs and 20 dome lights. We installed 1 mercury tube light and 1 dome light in each classroom. Similarly dome lights were fitted in verandah and staircase.

Furniture Support:

Furniture support was also in our plan. We supported 20 sets of large size desks, bench, 20 sets of medium sized desks, bench and repaired 20 sets of old desk and bench at Jalpadevi High School. At Setidevi High School, they have prepared enough desks, benches and therefore we did not support any furniture there. We supported teaching materials there.

Technical Support to the Construction Team:

To assist the construction team technically and to ensure the construction work meets the standard, we hired technical advisor until the construction work was going on. The technical advisor first orientated the construction team at Jalpadevi High School than after he made a couple of visits at the site and provided on the spot feedback throughout the construction period. At Setidevi Primary School, the technical advisor visited the site as per the need and supported the construction team.

Preparation of School Improvement Plan (SIP):

The review workshop on School Improvement Plan (SIP) of Shree Jalpadevi Higher Secondary School was organized at school classroom on 16 Sept, 2016. About 30 participants (School Management Committee members, Parent Teacher Association members, Teachers, Child Club members and parents) participated in the workshop. The workshop was facilitated by Shyam Thapa (resource person of Khadichaur Resource Center) and Dhurba Shrestha (Social Welfare Association of Nepal) jointly. Presentation and analysis of school records, defining objectives and goals, analysis of the problem, review of the activities and its prioritization were the steps followed for the review of SIP. News print Presentation, brainstorming, group discussion where the process followed during the review. This analysis was an eye opening to the SMC members, members of the PTA, parents and the teachers. After the analysis of the data, the participants brainstormed in groups on problems. They also defined school goal and objectives for coming 5 years.

Similarly, Setidevi Primary School also prepared its School Improvement Plan in guidance of Resource person Mr Shyam Thapa. This school also followed the same process of review of school records, defining objectives and goals, analysis of the problem, listing of the activities and its prioritization.

Deviation in the Plan:

There was deviation in the plan. In the first agreement, we agreed to reconstruct 20 classrooms at Jalpadevi High School and 4 classrooms at Setidevi Primary School. However we reconstructed 12 classrooms at Jalpadevi High School and 3 rooms at Setidevi Primary School.

At Jalpadevi an organization came up with a new proposal of demolishing the damaged truss building of 5 rooms and there reconstruct a new building with 12 rooms. The school management committee instead of repairing the metal truss building proposed us to drop the repair work of metal truss. SWAN agreed on this and a new agreement was made to complete the construction work of only RCC building. At Setidevi Primary School too, a team of volunteers came and agreed to repair one of the damaged school building.

Handover of the School Buildings:

Both the schools have been handed over to the community after successful completion of the reconstruction work.

On 20 Oct, 2016 Shree Jalpadevi High School was successfully handed over to the community in the presence of chief guest Mr Nirmal Ghimire, DEO Sindhupalchowk and Special Guests Mr Krishna Karki, Founder Chairperson SWAN and Ms Barbara Dyckhoff Karki, Founder President, SWAN Deutschland e.V. Similarly Shree Setidevi Primary School was handed over on 12 Jan, 016 to the community people amid a handover function. More than 500 local people gathered in a handover program at Jalpadevi High School and around 100 people gathered at Setidevi Primary School. The community people and DEO Sindhupalchowk acknowledged the SWAN's support.

CHAPTER: FIVE
MONITORING AND EVALUATION

SWAN together with DEO conducted the monitoring and supervision of the reconstruction work to ensure that the school buildings fulfill all the criteria as specified in the standard design. The monitoring and supervision were also conducted to assist working team by providing on the spot technical feedback where as necessary and assist in the timely completion of the construction work.

Monitoring by Technical Advisor:

SWAN technical advisor visited sites as per the need. The first visit was done before the construction work begun to instruct the construction team how to construct the school building as per the agreed design. This included roof slab plans, brick masonry work and the RCC work. Second visit he carried was during the concrete work of roof slab and third after the completion of the school building.

Joint Monitoring of SWAN and DEO:

While the construction work was going on, the DEO, technical advisor, Program Manager (SWAN), the DEO representatives from Sindhupalchowk visited the construction site and observed the construction work. The DEO Mr Rudrahari Bhadari with his technical team visited Shree Jalpadevi High School in August and gave a feedback on how to show the visibility of the SWAN's work and how to keep records of construction at School.

CHAPTER: SIX

ISSUES / CHALLENGES AND ITS RESOLUTION

During the implementation of the project we faced lots of issues and challenges. Some of the challenges were resolved within the management team; some were resolved with the support of partners and some of the challenges were out of our control. SWAN tried its best to resolve these issues timely and operate the project smoothly. The major issues / challenges and our efforts for the resolution are described here in detail.

Delay in the signing of the MoU:

Although the project time starts from Jan 02, 2016 the actual signing of the agreement with the funding partner was done in April 2016. Due to this delay, the community people were confused whether SWAN timely starts its work or not and tried to look after for alternatives.

Due to delay in signing of the agreement, the bidding process was also delayed. Selection of suppliers is a lengthy process and it took almost one month in selecting suppliers. The actual work at field begun only in June, 2016.

Construction Work Modality and Construction Team:

We discussed various alternatives on construction work modality. The SWAN construction team which was working on health shelter project could start work at Sindhupalchowk only on May. We waited this team to start our work. Local labors were used minimum.

Local labors and the Local need:

There was delay in implementing the project and we had to accelerate the construction work as fast as we can; so that students get safe classrooms as early as possible. We used minimum local labors, because we considered using technically efficient workforce instead of local workforce with limited technical knowledge. In addition to that, our work force continuously worked for 12 hours of a day, without any weekends.

During the half way completion of the RCC block of Shree Jalpadevi Secondary School, a new organization approached the school management committee (SMC) which forced us to drop our plan to reconstruct the metal truss building at Jalpadevi and one classroom at Setidevi Primary School.

Method of Resolution:

The method of resolution of the problem was often, to discuss in a team and come up with a conclusion. When we encountered problem, we shared this in a staff meeting in Kathmandu. This team suggested what to do next and gave responsibility to one of the staff members. S/he would contact DEO or contact community people to discuss on the issue and come up with the resolution. Series of meetings were carried with respective school management committees, DEO and technical advisor to overcome these issues. We also shared this to our donors when there was problem and that needed their support.

CHAPTER: SEVEN
VISIBILITY

Meetings:



Figure: Meetings with community members, stakeholders, and teachers

Initial photos of Schools:



Figure: Situation of schools before the construction support of SWAN

Photos during the Construction:



Figure: Construction work of Setidevi Primary School

Photos during the Construction:



Figure: Construction work of Jalpadevi Secondary School

Photos of new school buildings:



Figure: Jalpadevi Secondary School and Setidevi Primary School after SWAN's support

Photos after construction:



Figure: Students of Jalpadevi and Setidevi inside newly constructed classrooms

Photos during the Handover:



Figure: During handover event of Jalpadevi Secondary School on 20th October 2016

Photos during the Handover:

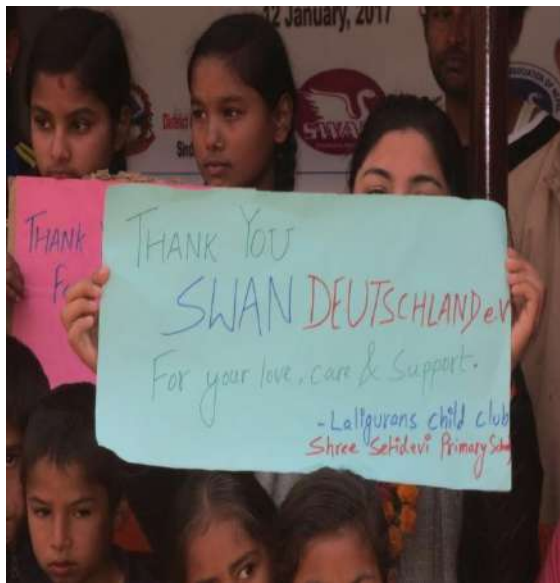


Figure: Handover event of Setidevi Primary school on 12th January 2017

ANNEX 1: PROJECT LOCATION

1.1 PROJECT LOCATION, SINDHUPALCHOWK (MARKED ORANGE)

