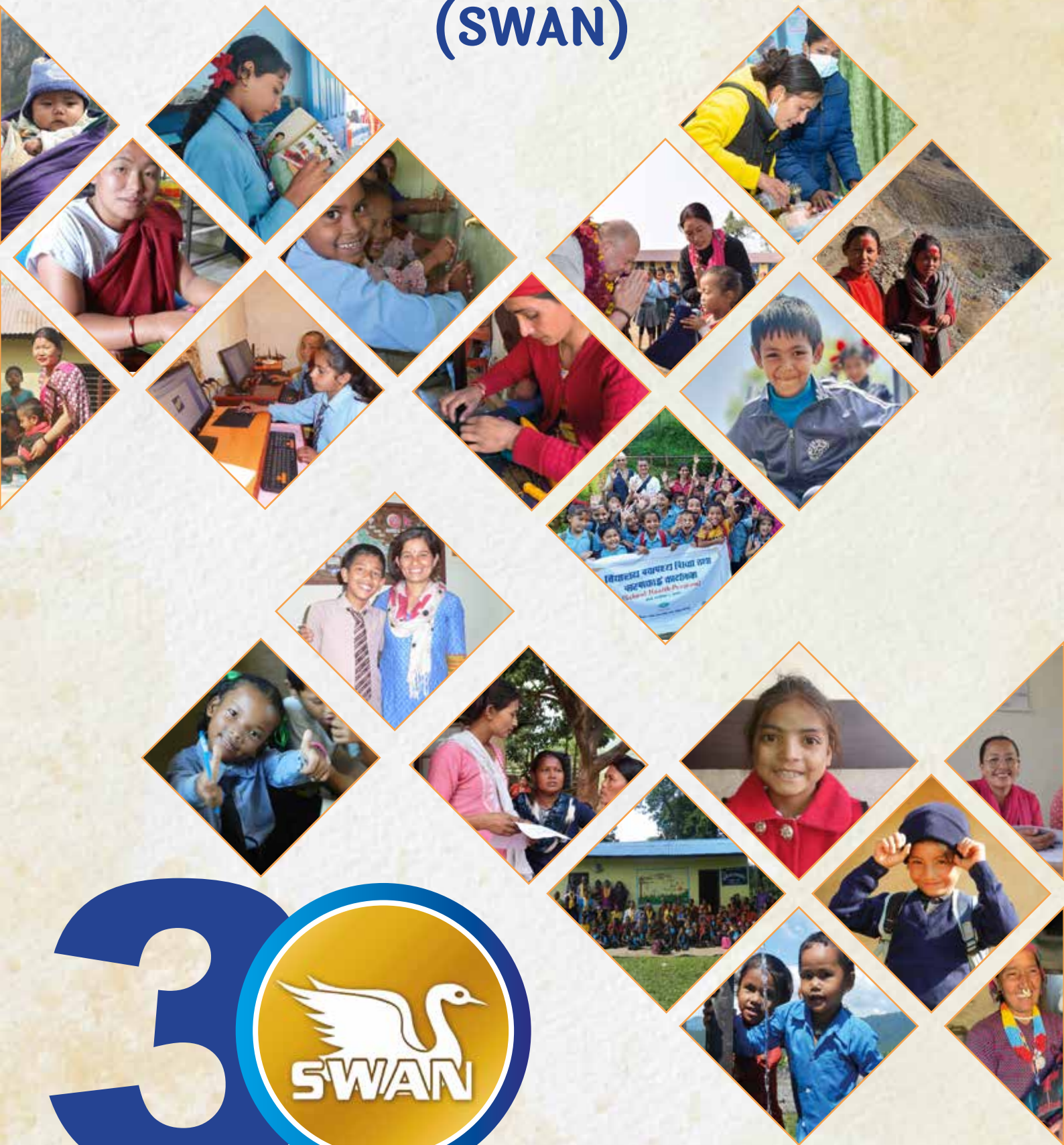


# Social Welfare Association of Nepal (SWAN)



**YEARS OF SERVICE TO HUMANITY**  
(1994-2024)

## MESSAGE FROM THE CHAIRPERSON



*Dear Friends, Supporters, and Well-Wishers,*

As we celebrate the SWAN's 30th anniversary, I am filled with immense pride and gratitude for the journey we have shared. What began three decades ago in the humble village of Narayansthan, Baglung, has grown into a mission that now reaches countless disadvantaged people and marginalized communities across Nepal. Our commitment to improving lives through education, healthcare, women's empowerment, and infrastructure development has been unwavering. Over the years, we have provided scholarships to thousands of students, ensuring that poverty does not become a barrier to their future. We have constructed health facilities and schools in rural areas where access to basic care & education was once a distant dream. We have supported women in their pursuit of dignity, independence, and leadership roles within their communities. Through our WASH (Water, Sanitation, and Hygiene) initiatives, we have ensured cleaner, safer environments for families, and our infrastructure projects have transformed villages, connecting them to opportunities that were once out of reach.

For the past 30 years, SWAN operates on the philosophy of "helping people help themselves," empowering individuals and groups to take charge of their own development. By providing resources, training, and support, SWAN equips marginalized and disadvantaged populations with the skills and knowledge needed to overcome challenges independently. This approach fosters self-reliance and resilience, ensuring that communities can sustain progress long after SWAN's direct involvement. Through initiatives in education, health, women's empowerment, and infrastructure, SWAN not only provides immediate aid but also lays the foundation for lasting, community-led development.

SWAN has equally prioritized sustainability & inclusive approach in all its projects to ensure lasting impact in the communities it serves. Moreover, SWAN's inclusive approach is centered on actively engaging community members in every step of its projects, fostering a strong sense of ownership. Additionally, SWAN works closely with local government agencies, aligning projects with national development goals and policies.

This journey, however, has not been ours alone. It is a testament to the collective dedication and tireless efforts of SWAN team, our partners, supporters, and volunteers—both within Nepal and around the world. Our sister organizations, SWAN Austria and SWAN Germany, have stood by us, strengthening our capacity to serve and expand our reach. Together, we have faced challenges, whether it be the devastation of earthquakes, the hardships of the COVID-19 pandemic, or the everyday struggles of those we serve. And together, we have risen to these challenges with resilience and hope.

As we look to the future, SWAN remains committed to its mission of building a more just, equitable, and prosperous society for all. Our work is far from done, and we are more motivated than ever to continue serving those who need us most. On behalf of SWAN, I extend my heartfelt thanks to all who have walked this path with us. Your belief in our cause, your generosity, and your unwavering support have made these 30 years possible.

Here's to the next chapter in our shared journey of hope and transformation.

*With deepest gratitude,*

Krishna Karki, Founder Chairman, SWAN Nepal

## ABOUT US

Since 1994, SWAN has been working alongside the Government of Nepal, bringing hope and positive change to the lives of rural women and children across the country. We are driven by four core pillars: education, health, livelihoods and WASH (water, sanitation and hygiene). To ensure the long-term sustainability of our programs, we promote gender equality, social inclusion (GESI), ecotourism and humanitarian assistance in all our initiatives.

As a development and humanitarian organization, our effort focuses on needy children, disadvantaged women and marginalized communities, primarily in Nepal's remote regions. Our past projects have made a lasting impact in Baglung, Sindhupalchowk, Parbat, Gorkha, Nuwakot, Mugu, Chitwan and Humla. Currently, we are actively involved in Baglung, Udayapur, Achham, Bajura and Humla. The success and sustainability of our projects is only achieved when winning trust of the locals and the commitment of local authorities. That is why we work in close collaboration with government agencies, rural municipalities, schools and local communities. We have witnessed remarkable transformation in the lives of individuals and communities we work with. In addition, we also responded to humanitarian crises like Nepal Earthquake 2015, and COVID-19 Pandemic by implementing life-saving interventions to those in need.

**SWAN Nepal is registered under the Organization Registration Act 2034 of Nepal with the District Administration Office, Kathmandu (Regd. No. 381/50/51) and is affiliated with the Social Welfare Council under section 13 of the Social Welfare Act, 1992 (SWC No. 1752).**



### → OUR VISION

A healthy, educated, and a self-reliant community, where all individuals enjoy basic human rights.

### → OUR MISSION

SWAN strives to support disadvantaged and rural communities in Nepal by providing accessible health care, education opportunities for children and enabling women to achieve financial independence and freedom.

### → OUR CORE VALUES

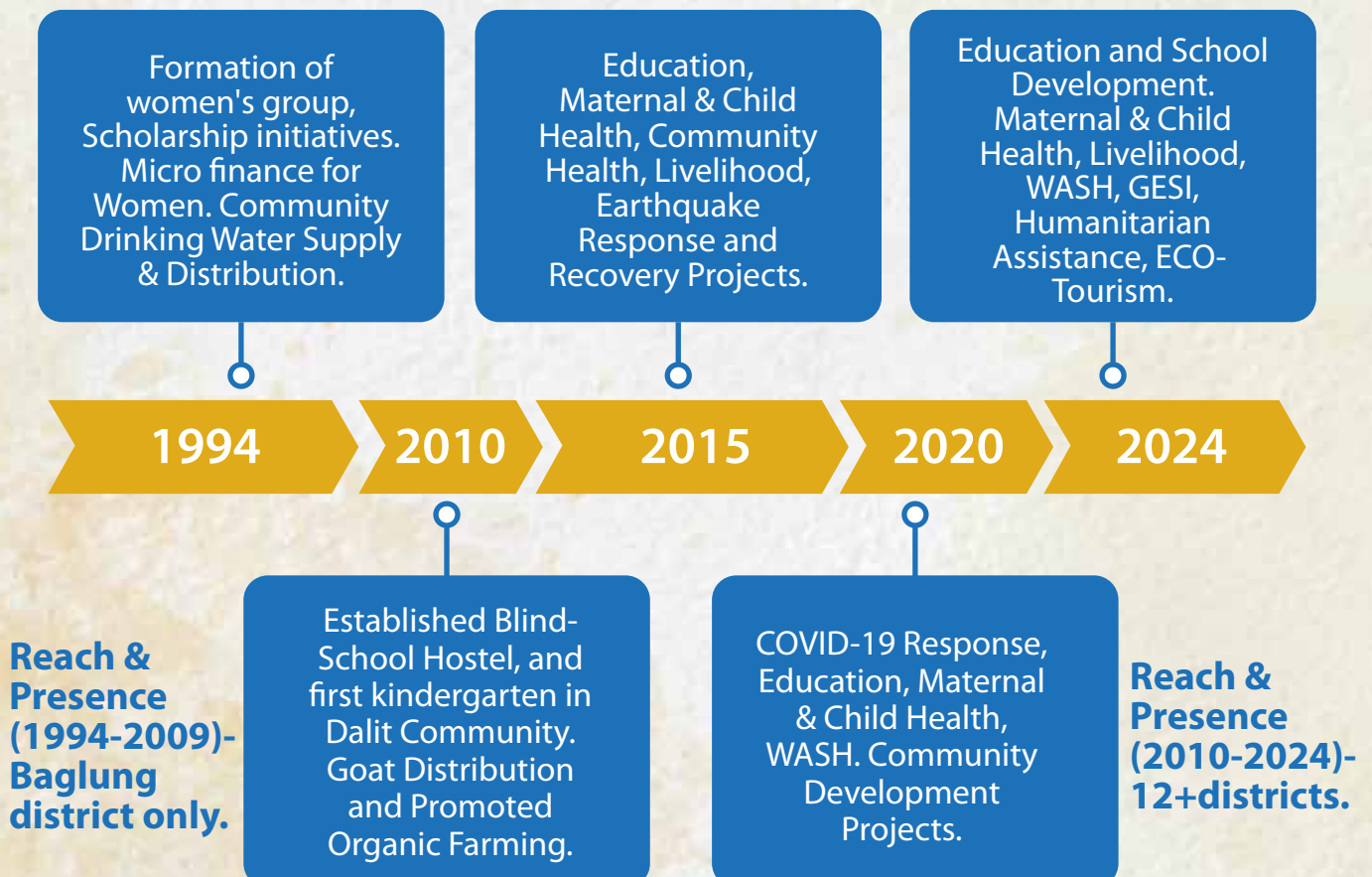
Sustainability, Equality, Inclusive and Transparency at the core, we are governed by love and trust for people and the places they come from.

# 30 YEARS OF IMPACT

<b>300+</b> <b>PROJECTS</b> focused on education, healthcare, and women empowerment.	<b>15+</b> <b>DISTRICTS</b> are reached including the most remotest region.	<b>20,000+</b> <b>CHILDREN</b> are reached across the country.
<b>20,000+</b> <b>MOTHERS &amp; NEWBORN</b> Supported during pregnancy, delivery and postnatal period.	<b>10,000+</b> <b>RURAL WOMEN</b> Empowered with skills and income generation opportunities.	<b>75,000+</b> <b>PEOPLE</b> Helped in Emergencies. (Earthquake and COVID -19 Response)

## TIMELINE

### SWAN TURNS 30





SWAN project districts

- |                   |            |
|-------------------|------------|
| 1. Kathmandu      | 7. Parbat  |
| 2. Chitwan        | 8. Baglung |
| 3. Nuwakot        | 9. Humla   |
| 4. Sindhupalchowk | 10. Mugu   |
| 5. Udayapur       | 11. Bajura |
| 6. Gorkha         | 12. Achham |

**WHY TO SUPPORT OUR PROGRAMMES TO HELP NEPALI PEOPLE AND COMMUNITIES IN NEED?**

For the past 30 years, SWAN has delivered extensive and sustainable solutions in education, health, livelihood, water, sanitation, hygiene (WASH), and humanitarian assistance to remote communities in Nepal. Despite our progress & impacts, there are still **challenges** where we aim to apply our expertise and strategic approaches to enhance our mission of empowering communities to be self-sustainable for better life.





## EDUCATION CHALLENGE

- ❖ 770,000 children aged 5-12 years are still out of school.
- ❖ Attendance in early childhood education is still low at 51%.
- ❖ Very few schools meet school standards.

### Target

- ❖ To enhance access to quality education from early childhood through primary and secondary levels in community schools across Nepal.

## OUR APPROACH

- ❖ Providing scholarship support for underprivileged children.
- ❖ Strengthening community schools through the construction and renovation of infrastructure.
- ❖ Empowering teachers through pedagogical trainings.
- ❖ Providing education, sports and essential resources (library, furniture, uniforms etc) for children.
- ❖ Focusing on early education through Early Childhood Development (ECD) interventions.
- ❖ Involving local government, school management committee and parents to ensure quality education in community schools for sustainability.

## HEALTH CHALLENGE

- ❖ The Maternal mortality rate (MMR) is currently 151 per 100,000 live births.
- ❖ The Neonatal mortality rate (NMR) is currently 21 out of every 1,000 live births

### Target

- ❖ To achieve the Sustainable Development Goal of reducing MMR to 70 maternal deaths per 100,000 live births and NMR to 12 or less per 1,000 live births by 2030.

## OUR APPROACH

- ❖ Providing access to basic health care services through construction and renovation of health facilities.
- ❖ Strengthening health facilities and birthing centers with provision of medicines, medical equipments and skilled health workers.
- ❖ Enhancing the skills of health workers to deliver effective healthcare services.
- ❖ Capacitating Health Facility Operation and Management Committee (HFOMC) and Female Community Health Volunteers (FCHVs) to improve maternal & child health and community health outcomes.
- ❖ Collaborating with local government, and health coordinators to support & strengthen health facilities and their services.



## LIVELIHOOD CHALLENGE

- ❖ Gender-based violence is prevalent.
- ❖ Less/limited economic opportunities for women.
- ❖ Dependence of women on subsistence farming.

### Target

- ❖ To improve the social status of Nepali women by promoting sustainable livelihoods.

### OUR APPROACH

- ❖ Providing training on alternative and off-seasonal farming and goat raising programmes.
- ❖ Empowering marginalized women through trainings on leadership and financial literacy.
- ❖ Providing vocational trainings such as tailoring & weaving for Individual financial independency
- ❖ Helping women's group to establish livelihood centers which serves as training, social entrepreneurship and eco-tourism.
- ❖ Promoting local markets, exhibitions and supply chains including transportation, storage and packaging.
- ❖ Encouraging local governments to provide matching funds for a project.



## WATER, SANITATION, AND HYGIENE (WASH) CHALLENGE

- ❖ 10.8 million people in Nepal do not have access to improved sanitation.
- ❖ 3.5 million people do not have access to basic water services.

### Target

- ❖ To ensure Water, Sanitation, and Hygiene (WASH) facilities in schools, health facilities and communities.

#### OUR APPROACH

- Improving access to clean water, hygiene and sanitation in schools, health facilities and communities.
- Promoting hygiene and sanitation practices through education and awareness.
- Creating a partnership with local government to co-invest in infrastructures: handwashing stations, proper toilets and water supply systems.



## HUMANITARIAN CHALLENGE

- ❖ Nepal is highly vulnerable to pandemics, climate change, and extreme natural disasters like earthquakes, floods, avalanches, and wind.

### Target

- ❖ To assist the government of Nepal in dealing with the humanitarian crisis.

### OUR APPROACH

- ❖ Providing immediate life-saving relief supplies to rebuilding and recovery programmes.
- ❖ Supporting the most vulnerable and disaster-affected children, women and communities in need with the life-saving programmes that align with the Nepal Government.

*Sources: Ministry of education, NDHS Report, 16<sup>th</sup> Periodic plan NPC, Government of Nepal*



## GOING FORWARD

SWAN will continue to focus on the underprivileged children and disadvantaged women of the most remote areas of Nepal. Throughout 2024 and beyond, we look forward to building new partnerships, as well as serving more people and communities in need across Nepal. We plan to achieve the same through the following approaches:

- ☞ Strategic and sustainable expansion of SWAN key projects such as education, maternal & child health, WASH and livelihoods to bring Sustainable and holistic changes to communities.
- ☞ Impact creation among rural disadvantaged women through income generation activities and alternative farming skills.
- ☞ Assist the Nepal Government during humanitarian crises.





1. The representatives of SWAN/GEI/NEOMED met with the locals of Swamikartik Khapar Rural Municipality, Bajura
2. SWAN patron Nick Cragg with school children in Narayansthan, Baglung
3. Manish Harijan, a former SWAN-sponsored student, is now a UK-based artist
4. SWAN-supported visually impaired students at Shree Janata Dhan Secondary School in Narayansthan, Baglung.
5. Donors from SWAN Austria and the SWAN team at the Khulaldanda Drinking Water Project inauguration in Udayapur



1. Sakas G.C., Program Manager monitor visits in Narayansthan, Baglung (2002)
2. Social Welfare Association of Nepal (SWAN) Board Members, Nepal
3. SWAN Österreich Board Members, Austria
4. SWAN Deutschland e.V. Board Members, Germany
5. action medeor, Apotheker Ohne Grenzen (AOG), and SWAN team holds a "Letter of Appreciation" given by the District Health Office, Sindhupalchowk for addressing the immediate healthcare needs to the earthquake affected populations in 2015



6. Reconstruction and renovation of the Shree Jalpa Devi Secondary School in Phulpingdanda, Sindhupalchowk following Nepal earthquake 2015
7. Kalpana Karki, Program Director, and Dhana Devi Sharma, Social Mobilizer of SWAN visited Germany in 2017
8. Joan Lukas Kuempers, a German national volunteers at Shree Bhawari DEVI Basic School in Udayapur
9. Teachers Training in Katari Municipality, Udayapur

# WHAT YOU CAN DO

SWAN is celebrating its 30th anniversary and still has a long way to go before fulfilling its mission in Nepal. Supporting Nepal's disadvantaged people and communities by providing accessible health care, educational opportunities for children and empowering women are ambitious but dire goals to achieve that requires all of our action now in sustainable approach for the future. Any financial contribution is highly appreciated, as it will enable us to pursue further projects on our way to fulfil SWAN mission.

## **BANK DETAILS: SWAN Nepal**

Ac. Number: 0110013084701  
Bank Address: NABIL Bank Ltd.  
Kantipath Branch, Ktm., Nepal  
SWIFT Code: NARB NP

## **BANK DETAILS: SWAN Deutschland e.V.**

Bank Name: VR Bank Kreis  
Steinfurt e.G.  
IBAN: DE37403619064083650700  
BIC: GENODEM11BB

## **BANK DETAILS: SWAN Österreich**

IBAN: AT25 3477 7000 0193 3217  
BIC: RZOOAT2L777



**Social Welfare Association of Nepal**  
Prameshwar Marg, Maharajgunj-3  
Kathmandu, Nepal  
Phone: 01-4720776  
Email: swan@swannepal.org  
Website: www.swannepal.org



**Dr. Barbara Dyckhoff-Karki,**  
President SWAN Deutschland e.v.,  
Est in 2014  
Email: b.dyckhoff-karki@gmx.de



**Arnold Hörmann, President,**  
SWAN Österreich,  
Est in 2016  
Email: info@camping-audonau.at